



Click or scan



Product description



Age

Number of users

Color Uncolored

Primary materials Robinia, Douglas

Installation Robinia in ground

Fall height

Dimensions 4,5 x 4,5 x 4,2 m

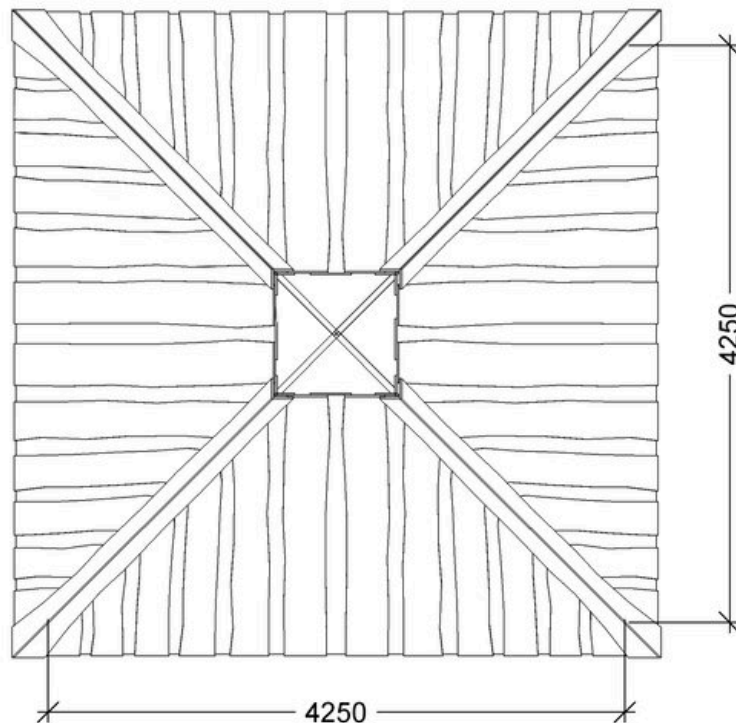
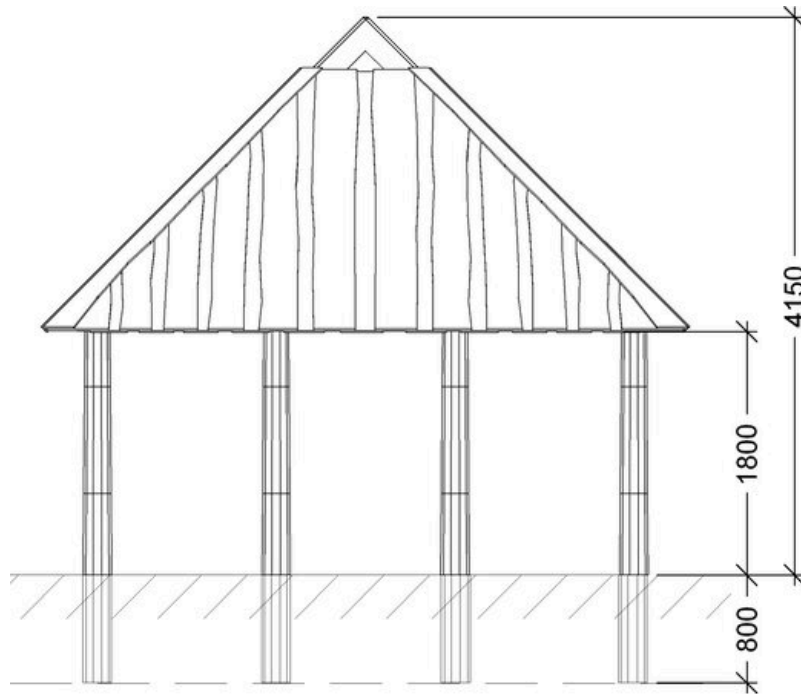
Fall area

Minimum area x x m

Variation	Color	Installation
LE20106	Chestnut	Robinia in ground

Warranty ([Terms and conditions](#))

Robinia	15 years
Douglas	10 years



Assembly time



Installation
Robinia in ground



Largest part



Number of installers



Concrete



Heaviest part